

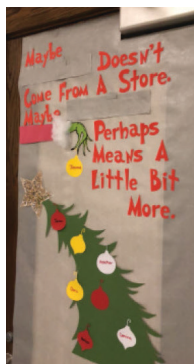
Get Ready for **Festive** FP&M

Festive Decorating December 12 - 16

Deck out your workspace.

Remove decorations by Jan. 6, 2023.

Examples: bulletin or marker boards, service counters, tool carts, break rooms, department



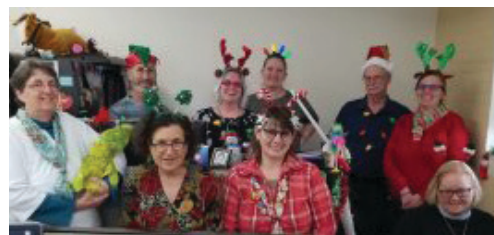
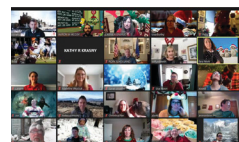
Participate as a team
or individually



Festive Outfits December 15 - 16

Dress in your favorite festive clothing.

All PPE must still be worn.



Take photos!

Send photos of your festive decorations and outfits to the Wellness committee at wellness@fpm.wisc.edu or **scan the QR code** above to upload them by Jan. 6, 2023. Photos will be featured on Inside FP&M and in the Employee Newsletter.



Get inspired

How do you like to celebrate during this winter season of many holidays?

See the images above for inspiration and make it your own!



**Facilities Planning
& Management**
UNIVERSITY OF WISCONSIN-MADISON

Know the guidelines

Scan the **QR code** for safety guidelines and rules. Please be thoughtful and respectful of others' beliefs and customs. Ensure your festive theme is appropriate seasonal decoration. **HAVE FUN!**

